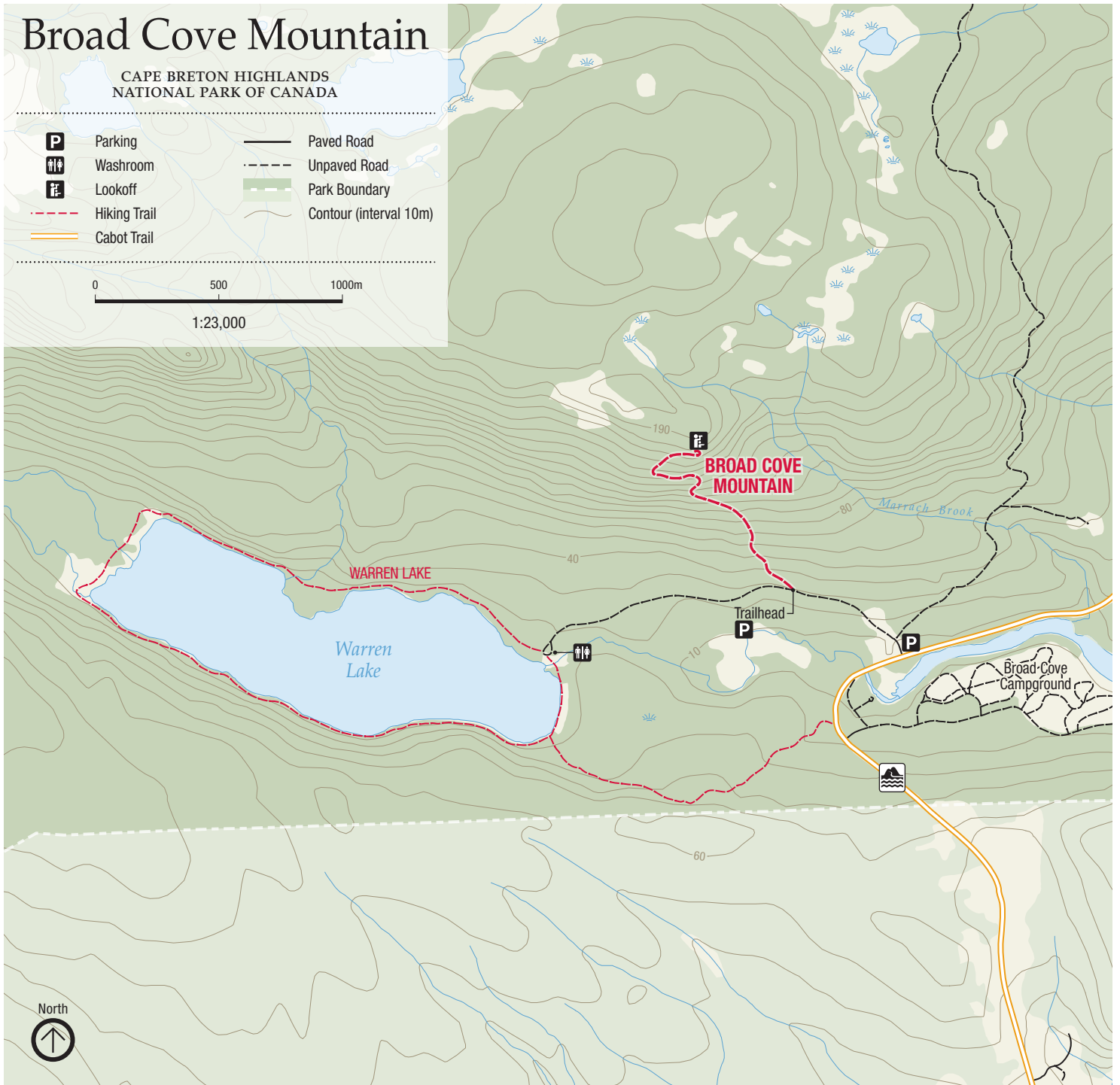
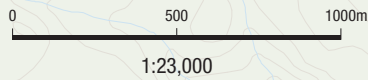




Broad Cove Mountain

CAPE BRETON HIGHLANDS
NATIONAL PARK OF CANADA

- Parking
- Washroom
- Lookoff
- Hiking Trail
- Cabot Trail
- Paved Road
- Unpaved Road
- Park Boundary
- Contour (interval 10m)



TRAIL INFORMATION

General	This short steep trail ends at a look off with excellent views of the rocky Atlantic coast, the spruce and hardwood valley sheltering Warren Lake and Broad Cove Campground.	Length	3.2km (2mi) return
		Elevation	35-180m (115-590ft)
		Time	1.5 hours